



Product Brochure

## **B7 - RESILIENT SEATED BUTTERFLY VALVES**



# RESILIENT SEATED BUTTERFLY VALVE

## B7 SERIES

- Bubble tight shut off at maximum rated working pressure in both directions.
- Face to face to ISO 5752/EN558 Series 20 and DIN3202 K1.
- Actuator mounting flange to ISO 5211.
- Profiled elastomer rubber seat that fully isolates valve body from the media, with molded-in O-rings for flange sealing with no need for additional gasket.
- Dry shaft design.
- Multi-drilled body locating holes for easy installation between flanges up to DN300.
- Extended body neck allows free access to actuator in case of pipe insulation
- Available with epoxy, Rilsan® and Enamel anticorrosion coatings.
- Can be supplied with manual, pneumatic, electric or hydraulic actuation.

The valve is designed for heavy duty industrial applications, for shutoff and modulating service.



### CONSTRUCTION MATERIALS

Body Cast Iron GG25 or Ductile Iron GGG40

Disc: Ductile Iron GGG40/ Rilsan or Enamel coated; Stainless Steel; AlBz; Duplex;

Super Duplex

Seat: EPDM, NBR, Viton

### TECHNICAL DATA

Sizes: DN40 – DN1200

MAWP: DN40 – DN1200 PN16 DN50 – DN300 PN25

Working Temperature: -29C – 120C

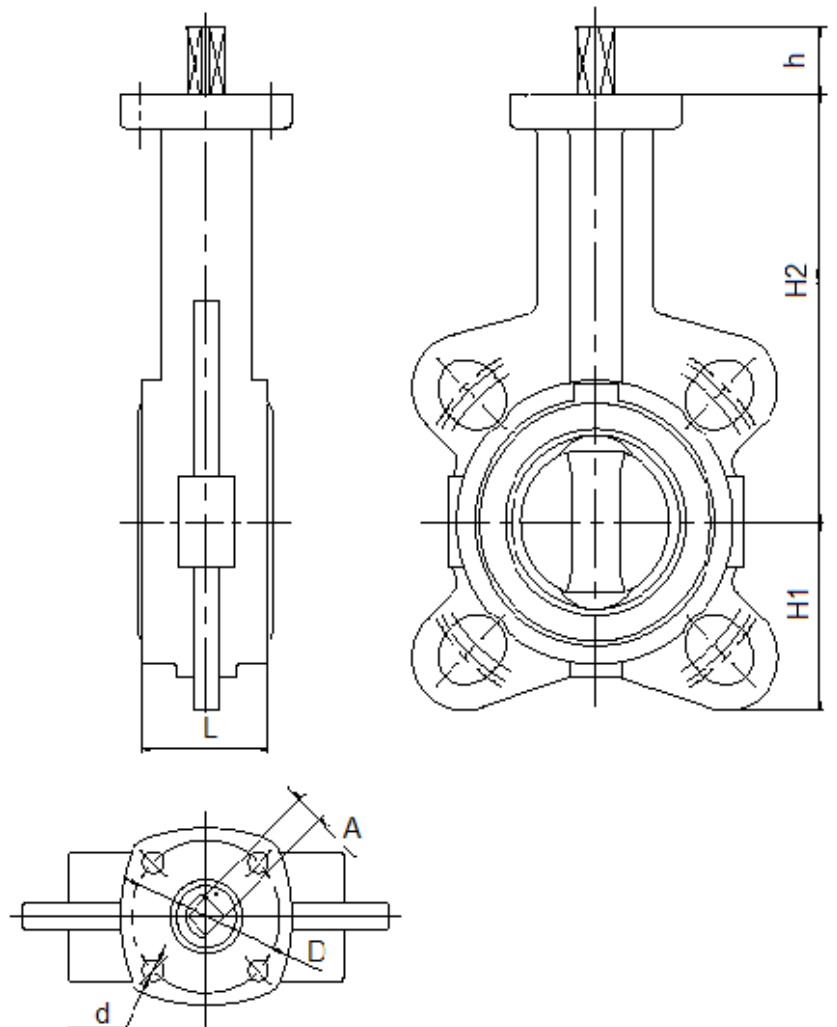
Flange Accomodation: DIN/BS/ANSI

### ACTUATOR TYPES

- Manual Lever up to DN150
- Manual Gear Operator
- Pneumatic Actuator
- Hydraulic Actuator
- Electric Actuator

MATERIALS & DIMENSIONS

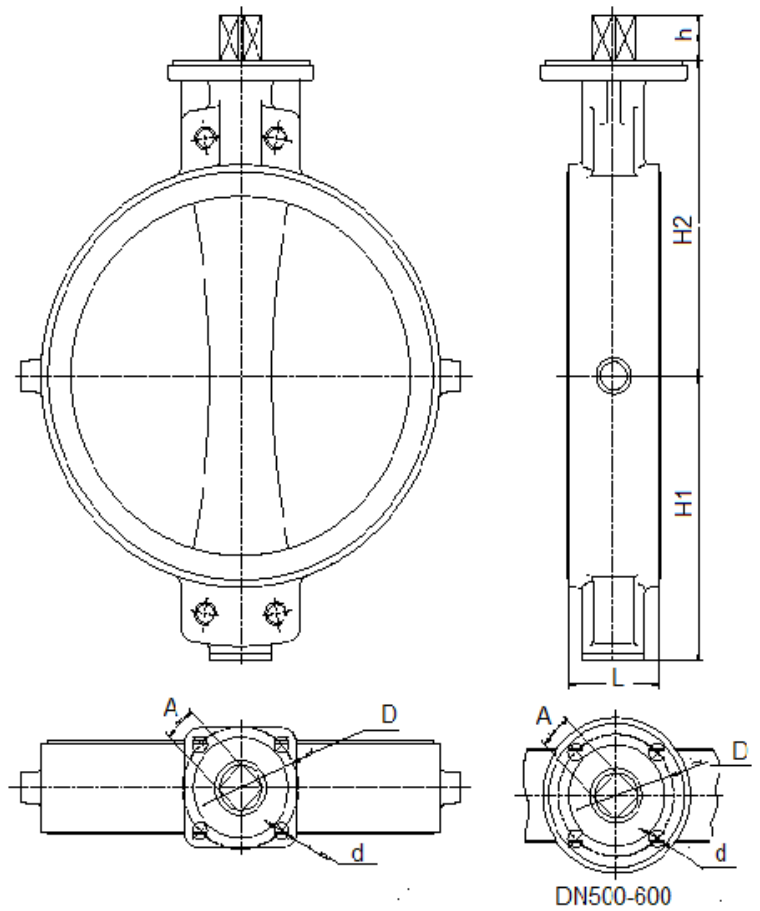
WAFER TYPE - DN50-300



DN	L	H1	H2	h	A	TOP FLANGE			Weight (Kg)
						D	d	ISO 5211	
50	43	62	140	22	11	50	7	F05	2.8
65	46	69	125	22	11	50	6,5	F05	3.5
80	46	92	160	22	11	50	6,5	F05	4.3
100	52	107	182	22	11	50	6,5	F05	55.3
125	56	122	195	22	14	70	8,5	F07	7.3
150	56	134	210	22	14	70	8,5	F07	9.5
200	60	166	237	22	17	70	8,5	F07	15
250	68	207	262.5	28	22	102	11	F10	22
300	78	234	300	28	22	102/125	11/13	F10/F12	38

## MATERIALS & DIMENSIONS

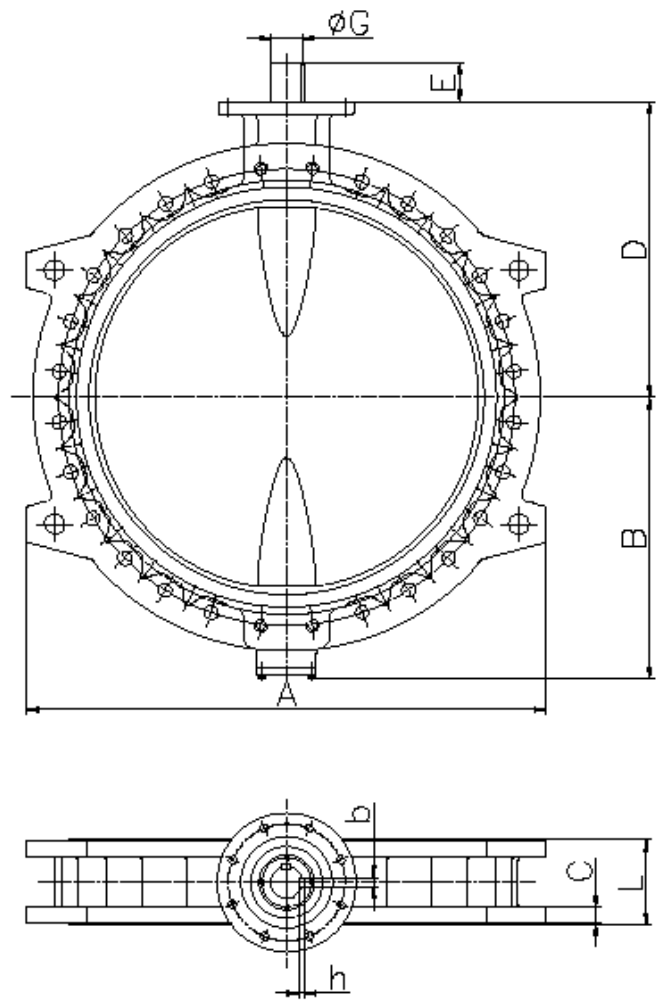
WAFER TYPE - DN350-600



DN	L	H1	H2	h	A	TOP FLANGE			Weight (Kg)
						D	d	ISO 5211	
350	78	270	300	36	27	125	14	F-12	45
400	102	300	345	43	32	140	18	F-12	65
450	114	330	375	49	36	140	18	F-14	95
500	127	375	425	63	46	165	18	F-14	125
600	154	430	495	63	46	165	22	F-16	185

MATERIALS & DIMENSIONS

WAFER TYPE - DN500-1200



DN	A	B	C	D	L	E	G	TOP FLANGE			Weight (Kg)
								b	h	ISO 5211	
500	750	395	26	425	127	65	60	18	11	F16	150
600	864	450	32	495	154	65	60	18	11	F16	225
700	960	535	36	570	165	80	70	20	12	F25	370
800	1084	586	38	640	190	80	70	20	12	F25	510
900	1194	666	38	700	203	100	80	22	14	F25	650
1000	1320	716	40	750	216	100	80	22	14	F30	820
1200	1520	861	50	870	254	120	100	28	16	F30	1300

Kv – flow coefficient m<sup>3</sup>/h

DN/Op Angle	20	30	40	50	60	70	80	90
50	3	9	21	39	68	99	105	110
65	6	17	45	79	133	188	201	220
80	16	21	67	101	119	186	305	330
100	13	36	121	182	203	430	573	615
125	30	64	150	280	363	662	890	1000
150	45	110	280	450	727	1125	1390	1700
200	75	216	390	625	890	1856	2850	3100
250	190	346	480	950	1350	2980	4850	5300
300	299	502	695	1355	2350	3950	6350	7700
350	380	683	990	1850	1920	4880	8900	10500
400	462	750	1350	2940	3800	7872	11950	13300
450	500	1055	1900	3200	5150	7900	15825	17200
500	620	1300	2350	3900	6350	8288	18300	21900
600	900	1880	3350	5700	9140	10225	26360	30500
700	1160	2325	3850	6700	10800	20500	35200	41700
800	1650	3300	5500	9900	15400	29100	50000	55600
900	2100	4200	7000	12500	19500	36900	63300	68800
1000	2600	5350	8700	15450	24200	45500	77500	86000
1200	3700	7500	12450	22400	34750	65500	112600	124000

**Q** = KvΔP/RD

**ΔP** = (P<sub>in</sub> - P<sub>out</sub>) in bar

**Q** - Flow in m<sup>3</sup>/h

**Kv** - Flow coefficient m<sup>3</sup>/h

Indicated for valves PN10/16

**RD** Specific gravity

For water = 1

### Sizing Torques (nm)

<b>DN</b>	<b>50</b>	<b>65</b>	<b>80</b>	<b>100</b>	<b>125</b>	<b>150</b>	<b>200</b>	<b>250</b>	<b>300</b>	<b>350</b>	<b>400</b>	<b>450</b>	<b>500</b>
16 barg	27	57	57	76	76	135	165	324	473	945	1350	2600	3250
<b>DN</b>	<b>600</b>	<b>700</b>	<b>800</b>	<b>1000</b>	<b>1200</b>								
10 barg	5200	5720	7020	10400	15600								



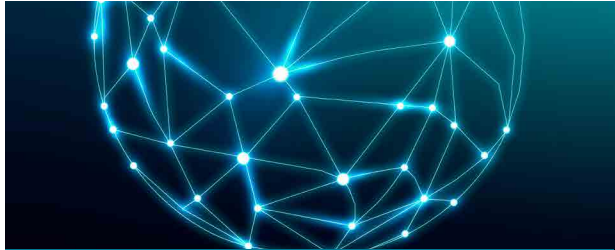
**FIRE PROTECTION**



**IRRIGATION**



**WATERWORKS**



**SMART SOLUTIONS**

**RAPHAEL VALVES INDUSTRIES (1975) LTD**, founded in 1949, is the first Israeli manufacturer of water control valves. RAPHAEL's research department constantly strives to introduce new and innovative products and solutions for water control systems including water works, fire-protection and irrigation systems and other fields.

**RAPHAEL Valves Industries (1975) Ltd.**

North Industrial Zone

Or Akiva, 3065401

POBox 555, Israel

**Phone:** +972 4 6263555

**E-mail:** info@raphael-valves.com

**Website:** www.raphael-valves.com

