

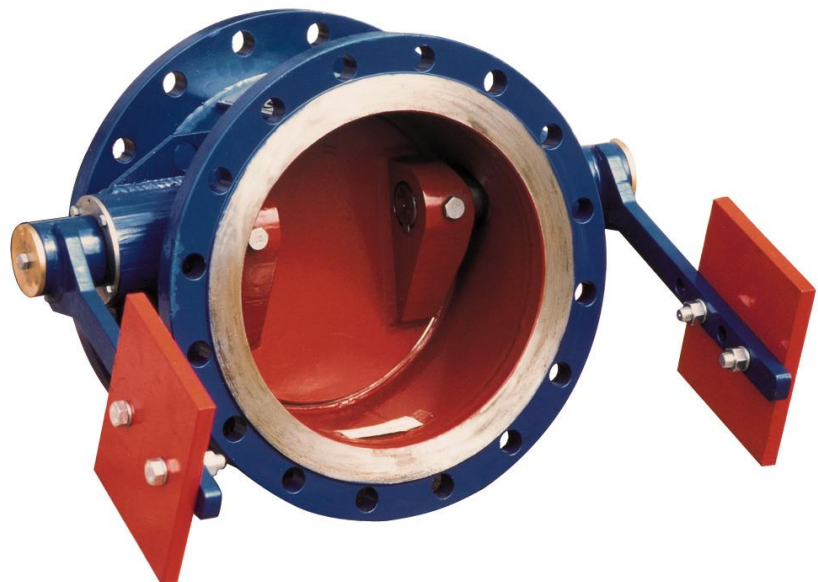


RAPHAEL

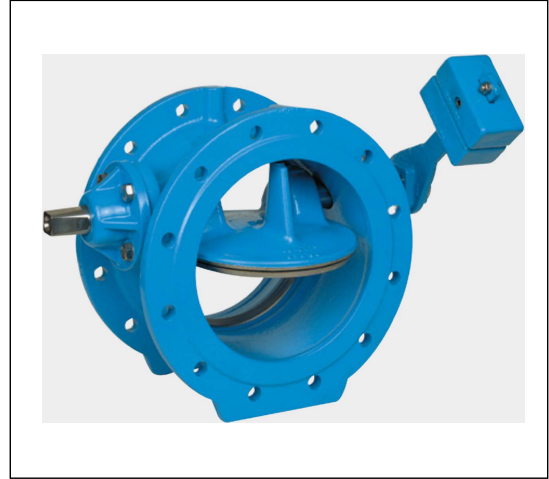
Product Brochure

TILTING DISC CHECK VALVE

Series E51-09



- Eccentric design with one or two counterweights.
- Metal to metal sealing in bronze or stainless steel.
- Double Flanged body to DIN, ANSI, JIS, AWWA.
- Self lubricating shaft bearings to allow fast closing.
- Robust construction with external and internal epoxy body anticorrosion coating to high industrial standard.
- Optionally can be equipped with hydraulic dampers.
- Construction is in accordance o applicable EN and DIN norms



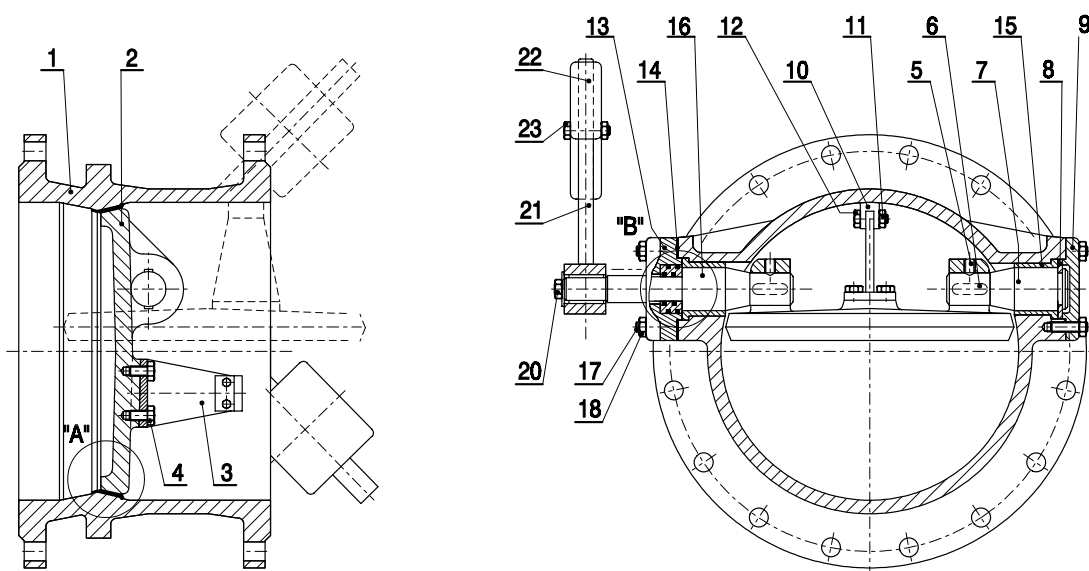
Check valve is designed for use in infrastructure and industrial water supply systems.



Sizes:	ДУ200 – ДУ1600
Working pressure range:	PN6 – PN40
Working Temperature:	-29C – 150C
Flange Drilling:	DIN/BS/ANSI/AWWA

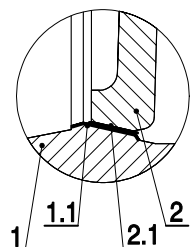
DESCRIPTION and TECHNICAL DATA

NOMINAL SIZE	PRESSURE RATING	FLANGES EN 1092-2	12266 TEST PRESSURE ACC. TO EN 12266 bar	
DN	PN bar	bar	BODY	CLOSED
200 – 1600	10	10	15	11
200 – 1600	16	16	24	17,6
200 – 800	25	25	37,5	27,5
200 – 400	40	40	60	44

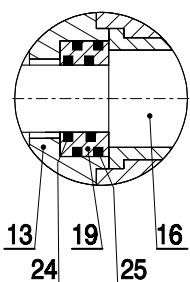


DETAIL A

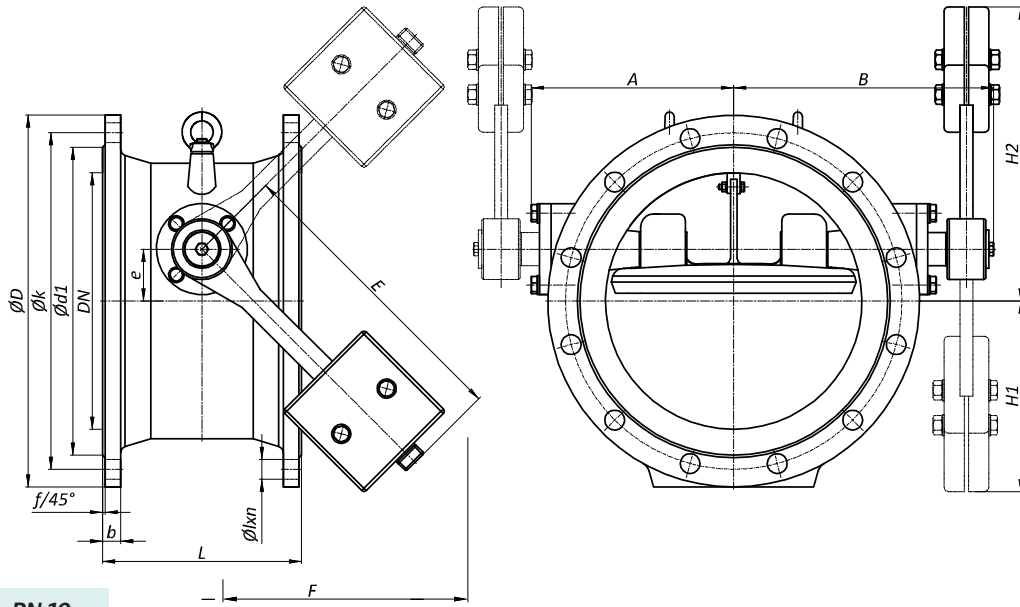
NIRO / NIRO
BZ / BZ



DETAIL B



PART	MATERIAL ACC TO EN	MATERIAL ACC TO DIN
1	EN-GJS-500-7	GGG 50
1.1	Cr Ni PLASMA	Cr Ni PLASMA
	-	CuAl 8
2	EN-GJS-500-7	GGG 50
2.1	Cr Ni PLASMA	Cr Ni PLASMA
	-	CuAl 8
3	S235JR	St 37-2
4	A2	A2
5	A2	A2
6	C 45 / A2	C 45 / A2
7	X20 Cr13	X20 Cr13
8	CC491K	CuSn 5 ZnPb
9	EN-GJS-500-7	GGG 50
10	EPDM	EPDM
11	A2	A2
12	A2	A2
13	EN-GJS-500-7	GGG 50
14	ARAMID	ARAMID
15	CC 480 K	CuSn 10
	PTFE - Compound	PTFE - Compound
16	X20Cr13	X20Cr13
17	8.8 gal. Zn / A2	8.8 gal. Zn / A2
18	8 gal. Zn / A2	8 gal. Zn / A2
19	CC 480 K	CuSn 10
20	8.8 gal. Zn / A2	8.8 gal. Zn / A2
21	S235JR	St 37-2
22	EN-GJL-250	GG 25
23	8.8 gal. Zn / A2	8.8 gal. Zn / A2
24	EPDM	EPDM
25	EPDM	EPDM



PN 10

DN	L	D	k	d ₁	n	l	b	f	e	A	B	F	E	H ₁	H ₂	m (kg)
200	230	340	295	266	8	23	20	3	40	204,5	254,5	213	300	213	293	54
250	250	395	350	319	12	23	22	3	48	237	306	213	300	205	301	70
300	270	445	400	370	12	23	24,5	4	62	260	400	319	450	305	429	95
350	290	505	460	429	16	23	24,5	4	70	276	359	319	450	298	438	140
400	310	565	515	480	16	28	24,5	4	81	315	446,5	425	600	407	569	190
450	330	615	565	530	20	28	25,5	4	90	360	454,5	425	600	398	578	210
500	350	670	620	582	20	28	26,5	4	100	365	464	425	600	388	588	240
600	390	780	725	682	20	31	30	5	124	500	622	460	650	421	669	360
700	430	895	840	794	24	31	32,5	5	145	480	610	531	750	471	761	520
800	470	1015	950	901	24	34	35	5	165	550	670	601	850	521	851	650
900	510	1115	1050	1001	28	34	37,5	5	160	606	855	691	980	636	956	910
1000	550	1230	1160	1112	28	37	40	5	203	642,5	810	601	850	499	905	1200
1200	630	1455	1380	1218	32	41	45	5	300	800	940	750	1100	609	1209	2000

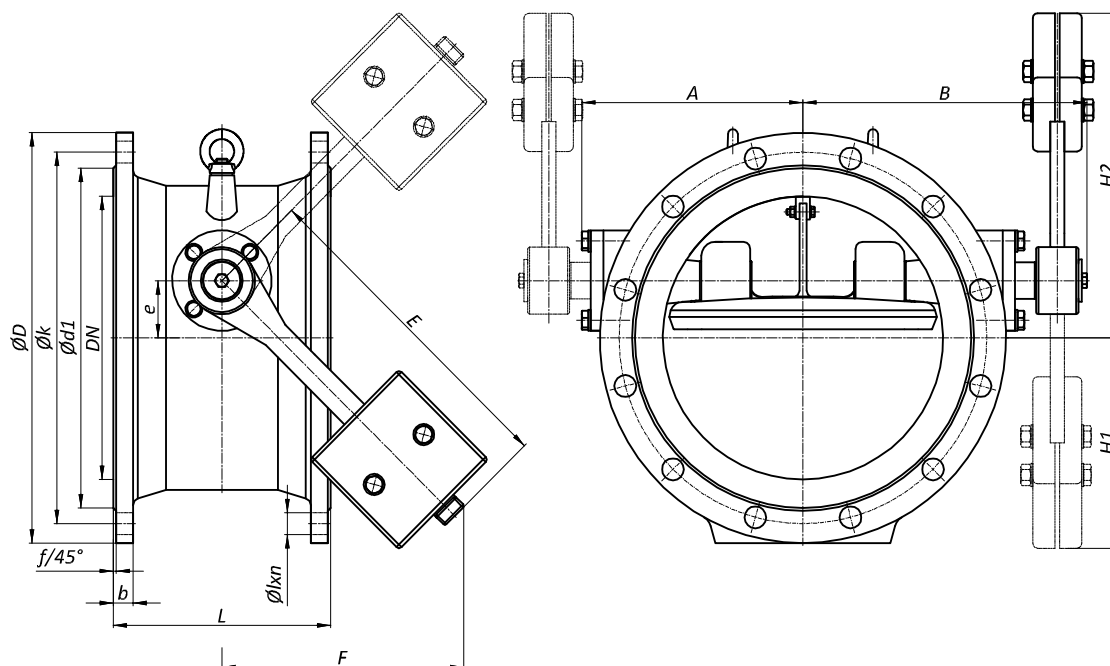
* other nominal sizes on request

PN 16

DN	L	D	k	d ₁	n	l	b	f	e	A	B	F	E	H ₁	H ₂	m (kg)
200	230	340	295	266	12	23	20	3	40	204,5	254,5	213	300	213	293	54
250	250	405	355	319	12	28	22	3	48	237	306	213	300	205	301	70
300	270	460	410	370	12	28	24,5	4	62	260	400	319	450	305	429	95
350	290	520	470	429	16	28	26,5	4	70	276	359	319	450	298	438	140
400	310	580	525	480	16	31	28	4	81	315	446,5	425	600	407	569	190
450	330	640	585	548	20	31	30	4	90	360	454,5	425	600	398	578	210
500	350	715	650	609	20	34	31,5	4	100	365	464	425	600	388	588	240
600	390	840	770	720	20	37	36	5	124	500	622	460	650	421	669	360
700	430	910	840	794	24	37	39,5	5	145	480	610	531	750	471	761	520
800	470	1025	950	901	24	41	43	5	165	550	670	601	850	521	851	650
900	510	1125	1050	1001	28	41	46,5	5	160	606	855	691	980	636	956	910
1000	550	1255	1170	1112	28	44	50	5	203	642,5	810	601	850	499	905	1200
1200	630	1485	1390	1218	32	50	57	5	300	800	940	750	1100	609	1209	2350

* other nominal sizes on request

DESCRIPTION and TECHNICAL DATA



PN 25

DN	L	D	k	d_1	n	l	b	f	e	A	B	F	E	H_1	H_2	m (kg)
200	230	360	310	274	12	28	22	3	40	204,5	254,5	213	300	213	293	60
250	250	425	370	330	12	31	24,5	3	48	237	306	213	300	205	301	77
300	270	485	430	389	16	31	27,5	4	62	260	400	319	450	305	429	105
350	290	555	490	448	16	34	30	4	70	276	359	319	450	398	438	153
400	310	620	550	503	16	38	32	4	81	315	446,5	425	600	407	569	200
500	350	730	660	609	20	38	36,5	4	100	365	464	425	600	388	588	264
600	390	845	770	720	20	41	42	5	124	500	622	460	600	421	669	396
700	430	960	875	820	24	44	46,5	5	145	480	610	531	750	471	761	572
800	470	1085	990	928	24	50	51	5	165	550	670	601	850	521	851	715

* other nominal sizes on request

PN 40

DN	L	D	k	d_1	n	l	b	f	e	A	B	F	E	H_1	H_2	m (kg)
200	230	375	320	284	12	31	30	3	40	204,5	254,5	213	300	213	293	64
250	250	450	385	345	12	34	34,5	3	48	237	306	213	300	205	301	85
300	270	515	450	409	16	34	39,5	4	62	260	400	319	450	305	429	110
350	290	580	510	465	16	38	44	4	70	276	359	319	450	298	438	158
400	310	660	585	535	16	41	48	4	81	315	446,5	425	600	407	569	210

* other nominal sizes on request



FIRE PROTECTION



IRRIGATION



WATERWORKS



SMART SOLUTIONS

RAPHAEL VALVES INDUSTRIES (1975) LTD, founded in 1949, is the first Israeli manufacturer of water control valves. RAPHAEL's research department constantly strives to introduce new and innovative products and solutions for water control systems including water works, fire-protection and irrigation systems and other fields.

RAPHAEL Valves Industries (1975) Ltd.

North Industrial Zone

Or Akiva, 3065401

POBox 555, Israel

Phone: +972 4 6263555

E-mail: info@raphael-valves.com

Website: www.raphael-valves.com

